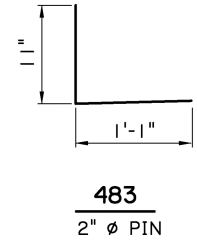


PLAN
SCALE : 1/4" = 1'-0"



Victor A. Sanchez
05/17/17

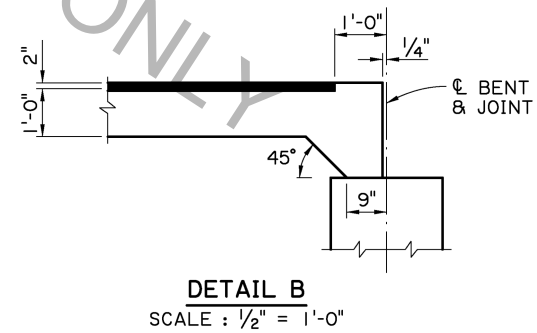
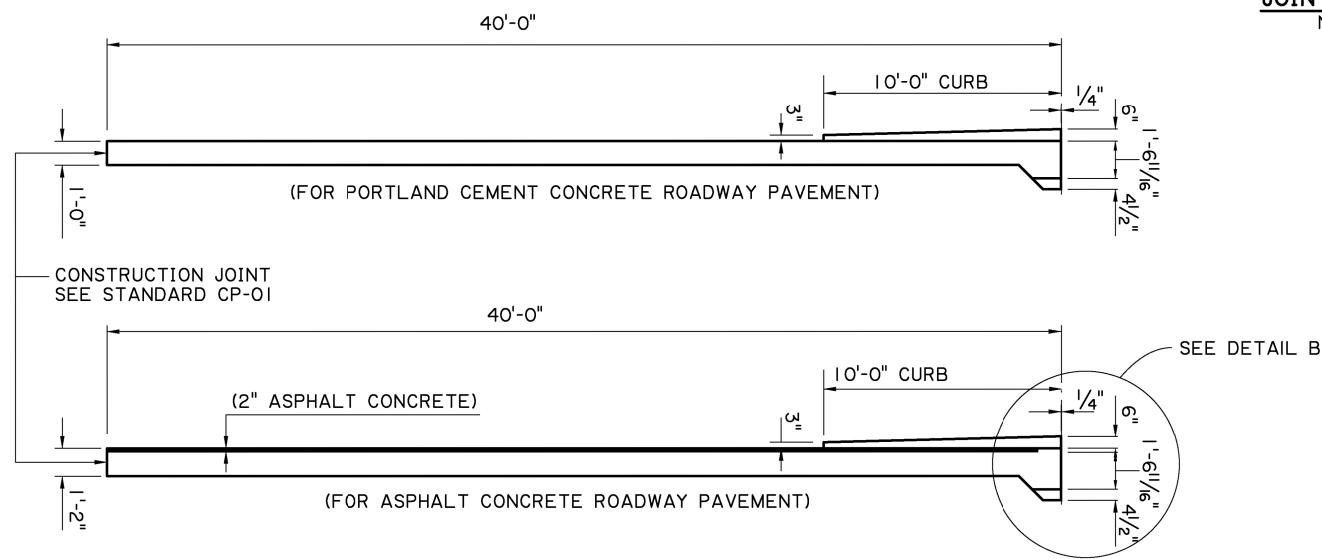
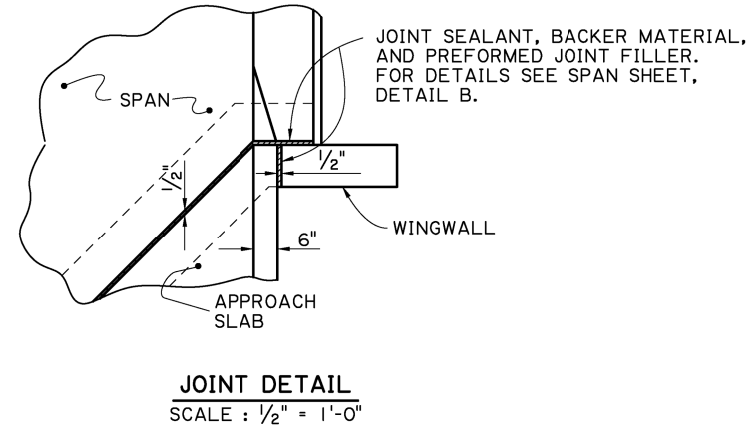
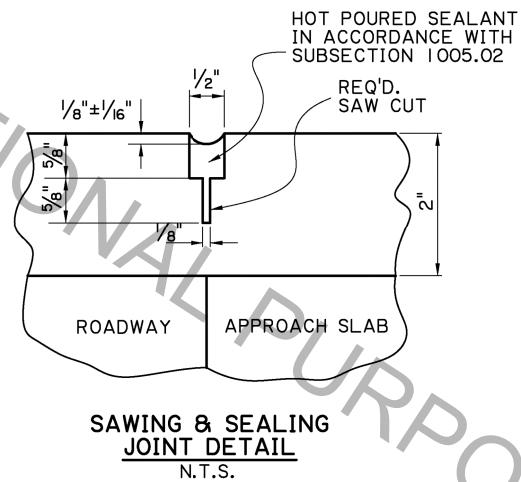
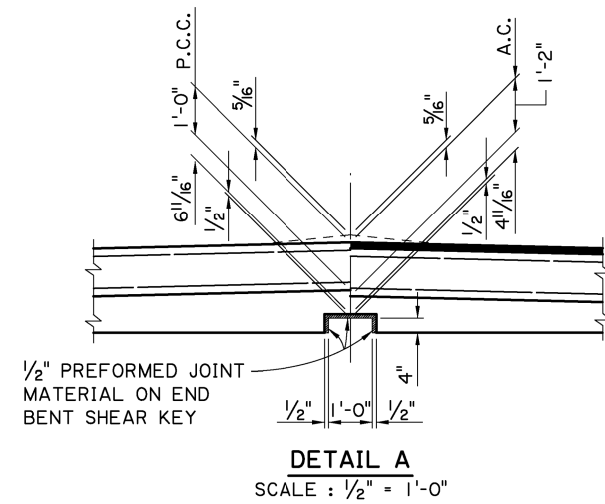
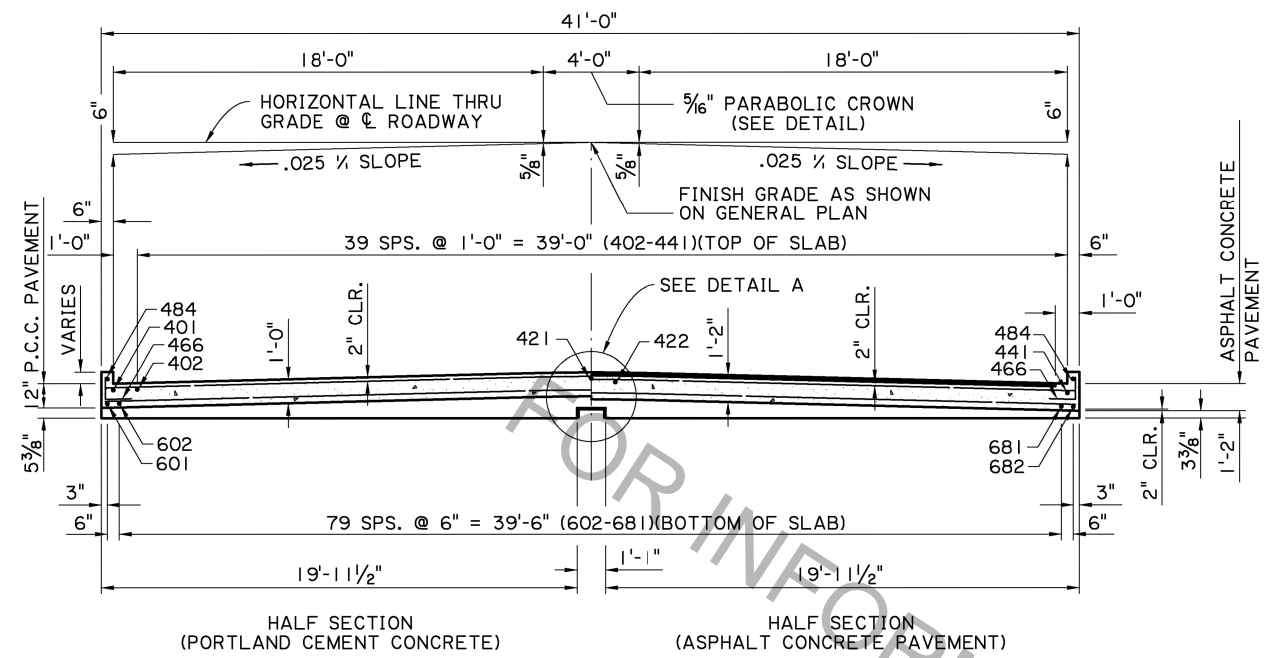
ESTIMATED QUANTITIES (ONE SLAB)						
BAR	NO.	SHORT BAR	VAR. (IN.)	LONG BAR	TOTAL LENGTH	LOCATION
601	1			19'-7"	19'-7"	LONGIT. BOT. OF SLAB
602-681	1 EA.	19'-10"	6.00	59'-4"	3166'-8"	LONGIT. BOT. OF SLAB
682	1			59'-7"	59'-7"	LONGIT. BOT. OF SLAB
683	40			40'-8"	1626'-8"	TRANSV. BOT. OF SLAB
684-6162	1 EA.	0'-10"	6.00	39'-10"	1606'-4"	TRANSV. BOT. OF SLAB
TOTAL NO. 6 BARS = 6478'-10" = 9731 LBS.						
401-421	1 EA.	19'-7"	12.00	39'-7"	621'-3"	LONGIT. TOP OF SLAB
* 422-441	1 EA.	42'-3"	12.00	61'-3"	1035'-0"	LONGIT. TOP OF SLAB
* 442	20			42'-4"	846'-8"	TRANSV. TOP OF SLAB
443-482	1 EA.	0'-10"	12.00	39'-10"	813'-4"	TRANSV. TOP OF SLAB
483	14			2'-0"	28'-0"	DOWELS IN CURB
484	2			9'-7"	19'-2"	LONGIT. IN CURB
TOTAL NO. 4 BARS = 3316'-3" = 2215 LBS.						
○ TOTAL DEFORMED REINFORCING STEEL						▪ 11946 LBS.
○ CONCRETE APPROACH SLAB						▪ 182.22 SQ.YDS.
☑ ASPHALT CONCRETE						▪ 18.6 TONS
☑ SAW CUT AND SEAL						▪ 39 LIN. FT.

* INCLUDES ONE (1) 1'-8" MINIMUM LAP SPLICE. ALL LAP SPLICES ARE TO BE STAGGERED.
○ TO BE PAID FOR UNDER ITEM CONCRETE APPROACH SLABS.
☑ REQUIRED WHEN APPROACH SLAB IS ADJACENT TO ASPHALT CONCRETE PAVEMENT, PAID FOR UNDER ITEMS ASPHALT CONCRETE AND SAWING AND SEALING TRANSVERSE JOINTS IN ASPHALT CONCRETE OVERLAY.

APPROACH SLAB NOTES:

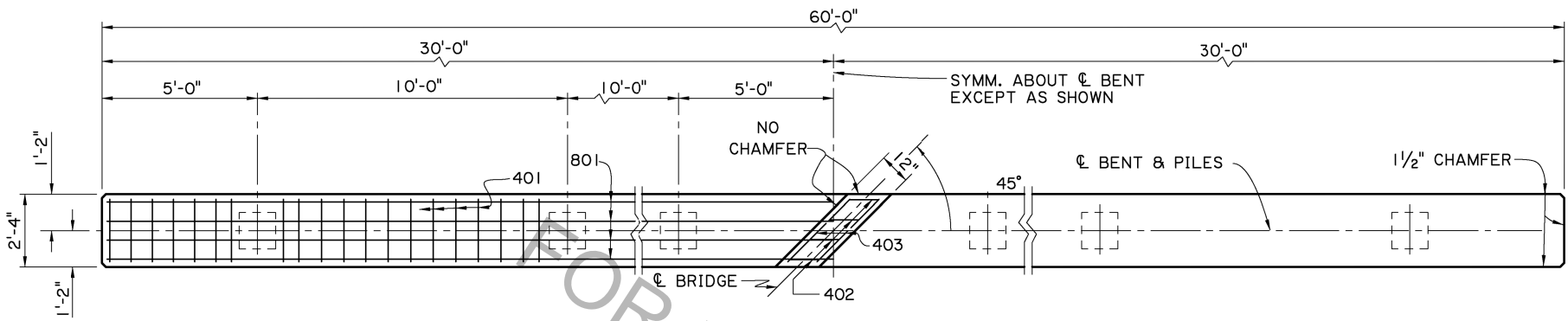
CONSTRUCTION SPECIFICATIONS: LATEST APPROVED LOUISIANA STANDARD SPECIFICATIONS FOR ROADS AND BRIDGES, SUPPLEMENTAL SPECIFICATIONS AND SPECIAL PROVISIONS.
DESIGN SPECIFICATIONS: AASHTO LRFD BRIDGE DESIGN SPECIFICATIONS, 4th EDITION, WITH 2008 & 2009 INTERIMS.
STRUCTURAL CONCRETE: ALL CONCRETE SHALL BE CLASS A1. EXPOSED EDGES SHALL HAVE A 3/4" CHAMFER, UNLESS OTHERWISE NOTED.
ASPHALT CONCRETE: TO BE THE SAME TYPE AS THE ASPHALT CONCRETE USED FOR THE APPROACH ROADWAY PAVEMENT OR OVERLAY.
REINFORCING STEEL: ALL REINFORCING STEEL SHALL BE GRADE 60. DIMENSIONS RELATING TO THE FABRICATION ARE OUT-TO-OUT OF BARS, UNLESS OTHERWISE NOTED. DIMENSIONS RELATING TO SPACING ARE TO BAR CENTERS.
BEDDING MATERIAL: FOR DETAILS OF BEDDING MATERIAL AND UNDERDRAINS, SEE STANDARD DETAIL BD.2.10.1.0.07.
SAWING & SEALING: THE ASPHALT CONCRETE SHALL BE SAW CUT AT THE END OF THE CONCRETE APPROACH SLAB THE ENTIRE ROADWAY WIDTH AND SEALED.
BASIS OF PAYMENT: ALL MATERIAL SHALL BE PAID FOR UNDER 'CONCRETE APPROACH SLABS' ACCORDING TO THE SPECIFICATIONS, EXCEPT WHERE NOTED ON THIS SHEET.

SHEET NUMBER		PARISH		CONTROL SECTION		STATE PROJECT	
DESIGNED	J. NAKHLEH	CHECKED	B. DELATTE	REVIEWED	OS/17/17	DATE	NO.
DETAILS	D. HYMEL	CHECKED	J. NAKHLEH	REVISION OR CHANGE	ORDER DESCRIPTION	BY	
APPROACH SLAB (1 OF 2) 40'-0" CONCRETE APPROACH SLAB 40'-0" CLEAR ROADWAY 45° CROSSING TWO WAY TANGENT STANDARD DETAIL CASBR-45-40TWT-40L-20SL							
DOTD BRIDGE DESIGN							

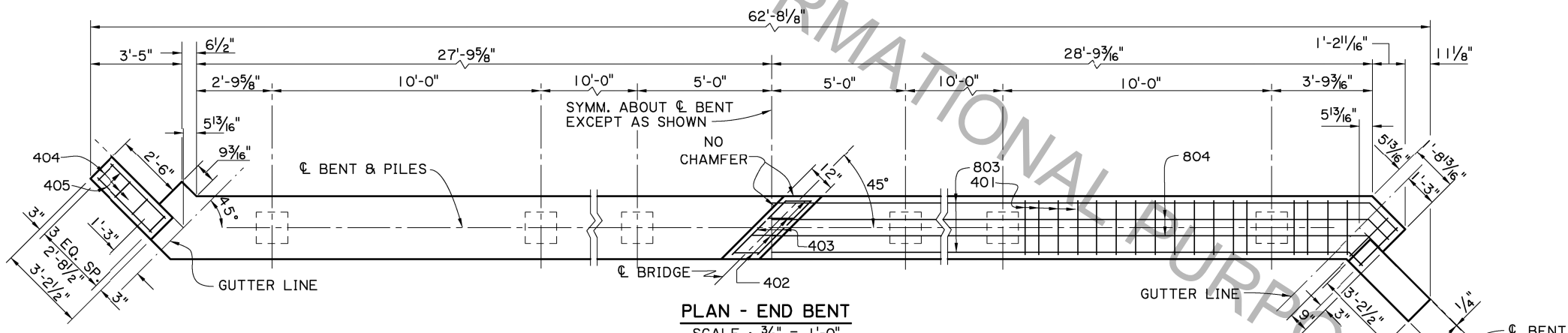


Victor A. Sanchez
05/17/17

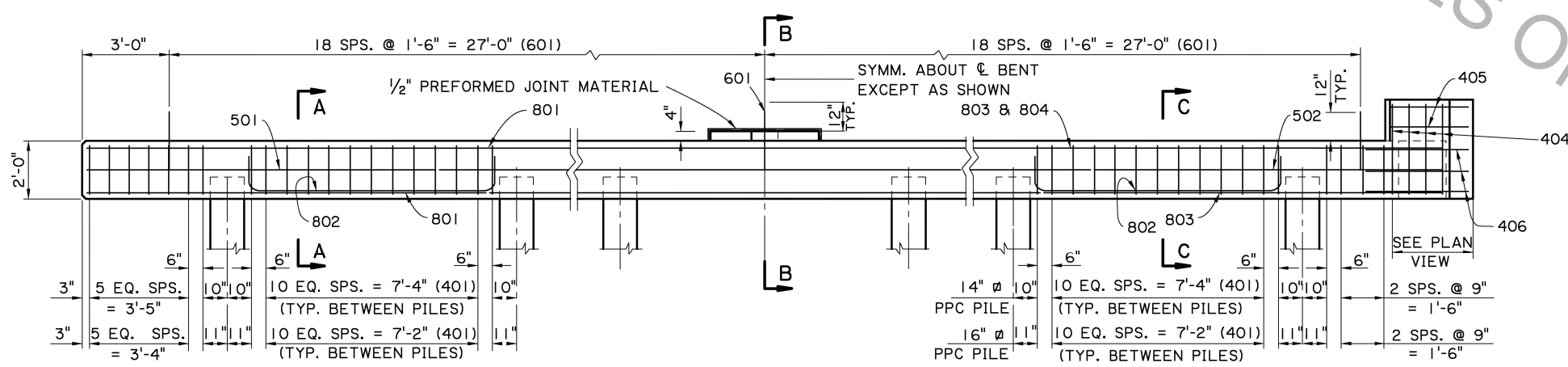
SHEET NUMBER		PARISH		CONTROL SECTION		STATE		PROJECT	
		J. NAKHLEH		D. HYMEL		05/17/17		2 OF 2	
DESIGNED		CHECKED		DETAILED		REVIEWED		BY	
J. NAKHLEH		B. DELATTE		D. HYMEL		J. NAKHLEH		NO.	
								DATE	
								REVISION OR CHANGE ORDER DESCRIPTION	
								NO.	
								DATE	
								REVISION OR CHANGE ORDER DESCRIPTION	
								NO.	
								DATE	
								REVISION OR CHANGE ORDER DESCRIPTION	
								NO.	
								DATE	
								REVISION OR CHANGE ORDER DESCRIPTION	
								NO.	
								DATE	
								REVISION OR CHANGE ORDER DESCRIPTION	
								NO.	
								DATE	
								REVISION OR CHANGE ORDER DESCRIPTION	
								NO.	
								DATE	
								REVISION OR CHANGE ORDER DESCRIPTION	
								NO.	
								DATE	
								REVISION OR CHANGE ORDER DESCRIPTION	
								NO.	
								DATE	
								REVISION OR CHANGE ORDER DESCRIPTION	
								NO.	
								DATE	
								REVISION OR CHANGE ORDER DESCRIPTION	
								NO.	
								DATE	
								REVISION OR CHANGE ORDER DESCRIPTION	
								NO.	
								DATE	
								REVISION OR CHANGE ORDER DESCRIPTION	
								NO.	
								DATE	
								REVISION OR CHANGE ORDER DESCRIPTION	
								NO.	
								DATE	
								REVISION OR CHANGE ORDER DESCRIPTION	
								NO.	
								DATE	
								REVISION OR CHANGE ORDER DESCRIPTION	
								NO.	
								DATE	
								REVISION OR CHANGE ORDER DESCRIPTION	
								NO.	
								DATE	
								REVISION OR CHANGE ORDER DESCRIPTION	
								NO.	
								DATE	
								REVISION OR CHANGE ORDER DESCRIPTION	
								NO.	
								DATE	
								REVISION OR CHANGE ORDER DESCRIPTION	
								NO.	
								DATE	
								REVISION OR CHANGE ORDER DESCRIPTION	
								NO.	
								DATE	
								REVISION OR CHANGE ORDER DESCRIPTION	
								NO.	
								DATE	
								REVISION OR CHANGE ORDER DESCRIPTION	
								NO.	
								DATE	
								REVISION OR CHANGE ORDER DESCRIPTION	
								NO.	
								DATE	
								REVISION OR CHANGE ORDER DESCRIPTION	
								NO.	
								DATE	
								REVISION OR CHANGE ORDER DESCRIPTION	
								NO.	
								DATE	
								REVISION OR CHANGE ORDER DESCRIPTION	
								NO.	
								DATE	
								REVISION OR CHANGE ORDER DESCRIPTION	
								NO.	
								DATE	
								REVISION OR CHANGE ORDER DESCRIPTION	
								NO.	
								DATE	
								REVISION OR CHANGE ORDER DESCRIPTION	
								NO.	
								DATE	
								REVISION OR CHANGE ORDER DESCRIPTION	
								NO.	
								DATE	
								REVISION OR CHANGE ORDER DESCRIPTION	
								NO.	
								DATE	
								REVISION OR CHANGE ORDER DESCRIPTION	
								NO.	
								DATE	
								REVISION OR CHANGE ORDER DESCRIPTION	
								NO.	
								DATE	
								REVISION OR CHANGE ORDER DESCRIPTION	
								NO.	
								DATE	
								REVISION OR CHANGE ORDER DESCRIPTION	
								NO.	
								DATE	
								REVISION OR CHANGE ORDER DESCRIPTION	
								NO.	
								DATE	
								REVISION OR CHANGE ORDER DESCRIPTION	
								NO.	
								DATE	
								REVISION OR CHANGE ORDER DESCRIPTION	
								NO.	
								DATE	
								REVISION OR CHANGE ORDER DESCRIPTION	
								NO.	
								DATE	
								REVISION OR CHANGE ORDER DESCRIPTION	
								NO.	
								DATE	
								REVISION OR CHANGE ORDER DESCRIPTION	
								NO.	
								DATE	
								REVISION OR CHANGE ORDER DESCRIPTION	
								NO.	
								DATE	
								REVISION OR CHANGE ORDER DESCRIPTION	
								NO.	
								DATE	
								REVISION OR CHANGE ORDER DESCRIPTION	
								NO.	
								DATE	
								REVISION OR CHANGE ORDER DESCRIPTION	
								NO.	
								DATE	
								REVISION OR CHANGE ORDER DESCRIPTION	
								NO.	
								DATE	
								REVISION OR CHANGE ORDER DESCRIPTION	
								NO.	
								DATE	
								REVISION OR CHANGE ORDER DESCRIPTION	
								NO.	
								DATE	
								REVISION OR CHANGE ORDER DESCRIPTION	
								NO.	
								DATE	
								REVISION OR CHANGE ORDER DESCRIPTION	
								NO.	
								DATE	
								REVISION OR CHANGE ORDER DESCRIPTION	
								NO.	
								DATE	
								REVISION OR CHANGE ORDER DESCRIPTION	
								NO.	
								DATE	
								REVISION OR CHANGE ORDER DESCRIPTION	
								NO.	
								DATE	
								REVISION OR CHANGE ORDER DESCRIPTION	
								NO.	
								DATE	
								REVISION OR CHANGE ORDER DESCRIPTION	
								NO.	
								DATE	
								REVISION OR CHANGE ORDER DESCRIPTION	
								NO.	
								DATE	
								REVISION OR CHANGE ORDER DESCRIPTION	
								NO.	
								DATE	
								REVISION OR CHANGE ORDER DESCRIPTION	
								NO.	
								DATE	
								REVISION OR CHANGE ORDER DESCRIPTION	
								NO.	
								DATE	
								REVISION OR CHANGE ORDER DESCRIPTION	
								NO.	
								DATE	
								REVISION OR CHANGE ORDER DESCRIPTION	
								NO.	
								DATE	
								REVISION OR CHANGE ORDER DESCRIPTION	
								NO.	
								DATE	
								REVISION OR CHANGE ORDER DESCRIPTION	
								NO.	
								DATE	
								REVISION OR CHANGE ORDER DESCRIPTION	
								NO.	
								DATE	
								REVISION OR CHANGE ORDER DESCRIPTION	
								NO.	
								DATE	
								REVISION OR CHANGE ORDER DESCRIPTION	
								NO.	
								DATE	
								REVISION OR CHANGE ORDER DESCRIPTION	
								NO.	
								DATE	
								REVISION OR CHANGE ORDER DESCRIPTION	
								NO.	
								DATE	
								REVISION OR CHANGE ORDER DESCRIPTION	
								NO.	
								DATE	
								REVISION OR CHANGE ORDER DESCRIPTION	
								NO.	
								DATE	
								REVISION OR CHANGE ORDER DESCRIPTION	
								NO.	
								DATE	
								REVISION OR CHANGE ORDER DESCRIPTION	
								NO.	
								DATE	
								REVISION OR CHANGE ORDER DESCRIPTION	
								NO.	
								DATE	



PLAN - INTERMEDIATE BENT
SCALE : 3/8" = 1'-0"



PLAN - END BENT
SCALE : 3/8" = 1'-0"



HALF ELEVATION - INTERMEDIATE BENT
SCALE : 3/8" = 1'-0"

HALF ELEVATION - END BENT
SCALE : 3/8" = 1'-0"

ESTIMATED QUANTITIES (ONE INTER. BENT)				
BAR NO.	UNIT	TOTAL	LOCATION	
	LENGTH	LENGTH		
801	6	59'-8"	358'-0"	LONGIT. IN CAP
802	10	10'-10"	108'-4"	LONGIT. IN CAP BETWEEN PILES
TOTAL NO. 8 BARS = 466'-4" = 1245 LBS.				
601	37	2'-0"	74'-0"	DOWELS
TOTAL NO. 6 BARS = 74'-0" = 111 LBS.				
501	2	59'-8"	119'-4"	LONGIT. IN CAP
TOTAL NO. 5 BARS = 119'-4" = 124 LBS.				
401	79	8'-2"	645'-2"	STIRRUPS IN CAP
402	5	5'-0"	25'-0"	STIRRUPS IN RISER
403	2	2'-9"	5'-6"	LONGIT. IN RISER
TOTAL NO. 4 BARS = 675'-8" = 451 LBS.				
TOTAL DEFORMED REINFORCING STEEL = 1931 LBS.				
CLASS A1 CONCRETE = 10.11 CU. YDS.				
MAX. PILE LOAD: SERVICE DEAD LOAD = 28 TONS				
SERVICE LIVE LOAD = 32 TONS				
FACTORED TOTAL LOAD = 80 TONS				

ADD 111 LBS. OF REINFORCING STEEL (37-601 DOWELS) WHEN TWO FIXED ENDS OCCUR ON THE SAME BENT.

ESTIMATED QUANTITIES (ONE END BENT)				
BAR NO.	UNIT	TOTAL	LOCATION	
	LENGTH	LENGTH		
802	10	10'-10"	108'-4"	LONGIT. IN CAP BETWEEN PILES
803	4	58'-9"	235'-0"	LONGIT. IN CAP
804	2	58'-9"	117'-6"	LONGIT. IN CAP
TOTAL NO. 8 BARS = 460'-10" = 1230 LBS.				
601	37	2'-0"	74'-0"	DOWELS
TOTAL NO. 6 BARS = 74'-0" = 111 LBS.				
502	2	58'-9"	117'-6"	LONGIT. IN CAP
TOTAL NO. 5 BARS = 117'-6" = 123 LBS.				
401	77	8'-2"	628'-10"	STIRRUPS IN CAP
402	5	5'-0"	25'-0"	STIRRUPS IN RISER
403	2	2'-9"	5'-6"	LONGIT. IN RISER
404	8	8'-9"	70'-0"	STIRRUPS IN WINGWALL
405	8	2'-10"	22'-8"	LONGIT. IN WINGWALL
406	12	4'-0"	48'-0"	LONGIT. IN WINGWALL
TOTAL NO. 4 BARS = 800'-0" = 534 LBS.				
TOTAL DEFORMED REINFORCING STEEL = 1998 LBS.				
CLASS A1 CONCRETE = 10.78 CU. YDS.				
MAX. PILE LOAD: SERVICE DEAD LOAD = 28 TONS				
SERVICE LIVE LOAD = 32 TONS				
FACTORED TOTAL LOAD = 80 TONS				

16" # PPC PILES USED FOR ESTIMATING PURPOSES ONLY. (ADD 0.07 CU. YDS. OF CLASS A1 CONCRETE PER BENT WHEN 14" # PPC PILES ARE USED.)

AS-DESIGNED RATING		
VEHICLE	RATING FACTOR	NOTES
HL-93 (INV)	1.358	
HL-93 (OPR)	1.761	
LADV-11 (INV)	1.045	MAGNIFICATION FACTOR = 1.3



Victor A. Sanchez
05/17/17

SHEET NUMBER

DESIGNED BY: J. NAKHLEH
CHECKED BY: B. DELATTE
CONTROL SECTION: D. HYMEL
STATE PROJECT: 05/17/17
SERIES #: 1 OF 2

REVISION OR CHANGE ORDER DESCRIPTION

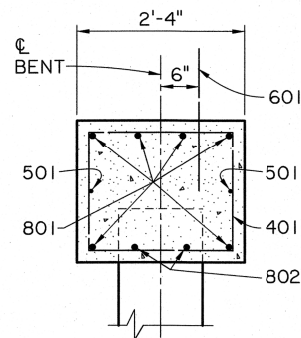
DATE

NO.

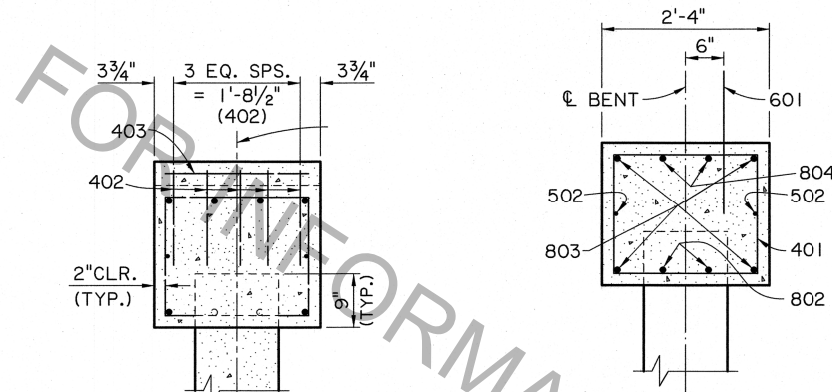
BY

STATE OF LOUISIANA
REINFORCED CONCRETE PILE BENT
40'-0" CLEAR ROADWAY
45° CROSSING TWO WAY TANGENT
STANDARD DETAIL
BCSSBR-45-40WT-20SL

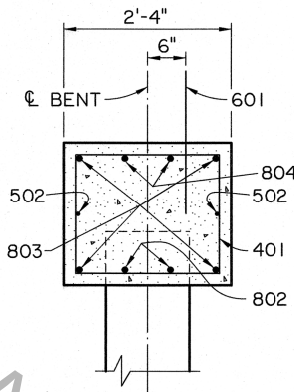
DOTD
DOTD BRIDGE DESIGN



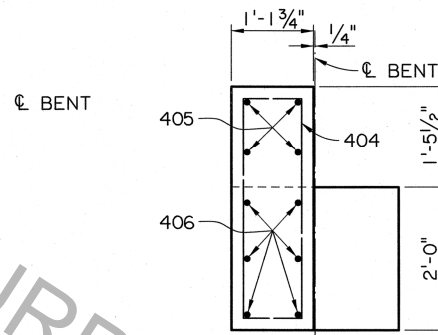
SECTION A-A
SCALE : 3/4" = 1'-0"



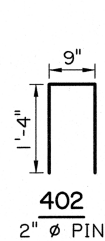
SECTION B-B
SCALE : 3/4" = 1'-0"



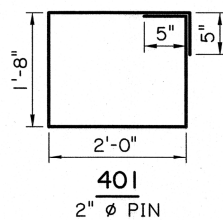
SECTION C-C
SCALE: 3/4" = 1'-0"



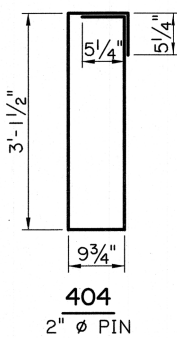
END ELEVATION
SCALE : 3/4" = 1'-0"



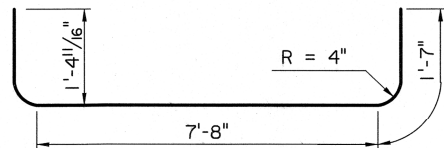
402
2" Ø PIN



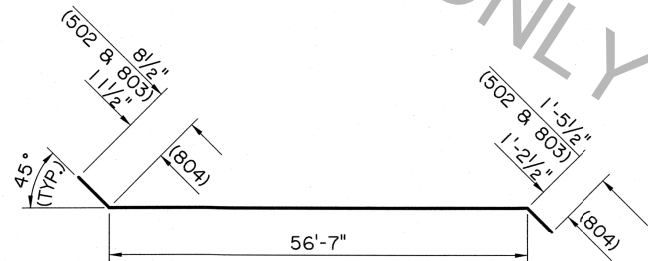
401
2" Ø PIN



404
2" Ø PIN



802
6" Ø PIN



502, 803 & 804
3 3/4" Ø PIN (502)
6" Ø PIN (803 - 804)

BENT NOTES:

CONSTRUCTION SPECIFICATIONS: LATEST APPROVED LOUISIANA STANDARD SPECIFICATIONS FOR ROADS AND BRIDGES, SUPPLEMENTAL SPECIFICATIONS AND SPECIAL PROVISIONS.
DESIGN SPECIFICATIONS: AASHTO LRFD BRIDGE DESIGN SPECIFICATIONS, 4th EDITION WITH 2008 & 2009 INTERIMS.

DESIGN LOAD: LIVE LOAD IS HL-93, AND LADV-11 (LOUISIANA DESIGN VEHICLE LIVE LOAD 2011).

STRUCTURAL CONCRETE: ALL CONCRETE SHALL BE CLASS A1. EXPOSED EDGES SHALL HAVE A 3/4" CHAMFER UNLESS OTHERWISE NOTED. ALL EXPOSED FACES OF WINGWALLS AND ENDS OF CAPS SHALL RECEIVE A SURFACE FINISH AS PER SUB-SECTION 805.08 OF THE STANDARD SPECIFICATIONS, EXCEPT WHEN SPECIFIED ELSEWHERE IN THE PLANS.

1/2" PREFORMED JOINT MATERIAL AND ASPHALT SATURATED FELT SHALL BE INCLUDED IN THE PRICE BID FOR CLASS A1 CONCRETE.

REINFORCING STEEL: ALL REINFORCING STEEL SHALL BE GRADE 60. DIMENSIONS RELATING TO FABRICATION ARE OUT TO OUT OF BARS UNLESS OTHERWISE NOTED. DIMENSIONS RELATING TO SPACING ARE TO BAR CENTERS, UNLESS OTHERWISE NOTED. DOWELS (601 BARS) SHALL BE PROVIDED AT ALL FIXED BEARINGS AND APPROACH SLAB BEARINGS (SEE GENERAL PLAN). ALL EXPOSED ENDS OF DOWELS SHALL BE WRAPPED WITH TWO LAYERS OF 15 LB. ASPHALT SATURATED FELT. CLOSE FITTING TUBES OF COMPRESSIBLE MATERIAL NOT LESS THAN 3/16" THICK MAY BE SUBSTITUTED.

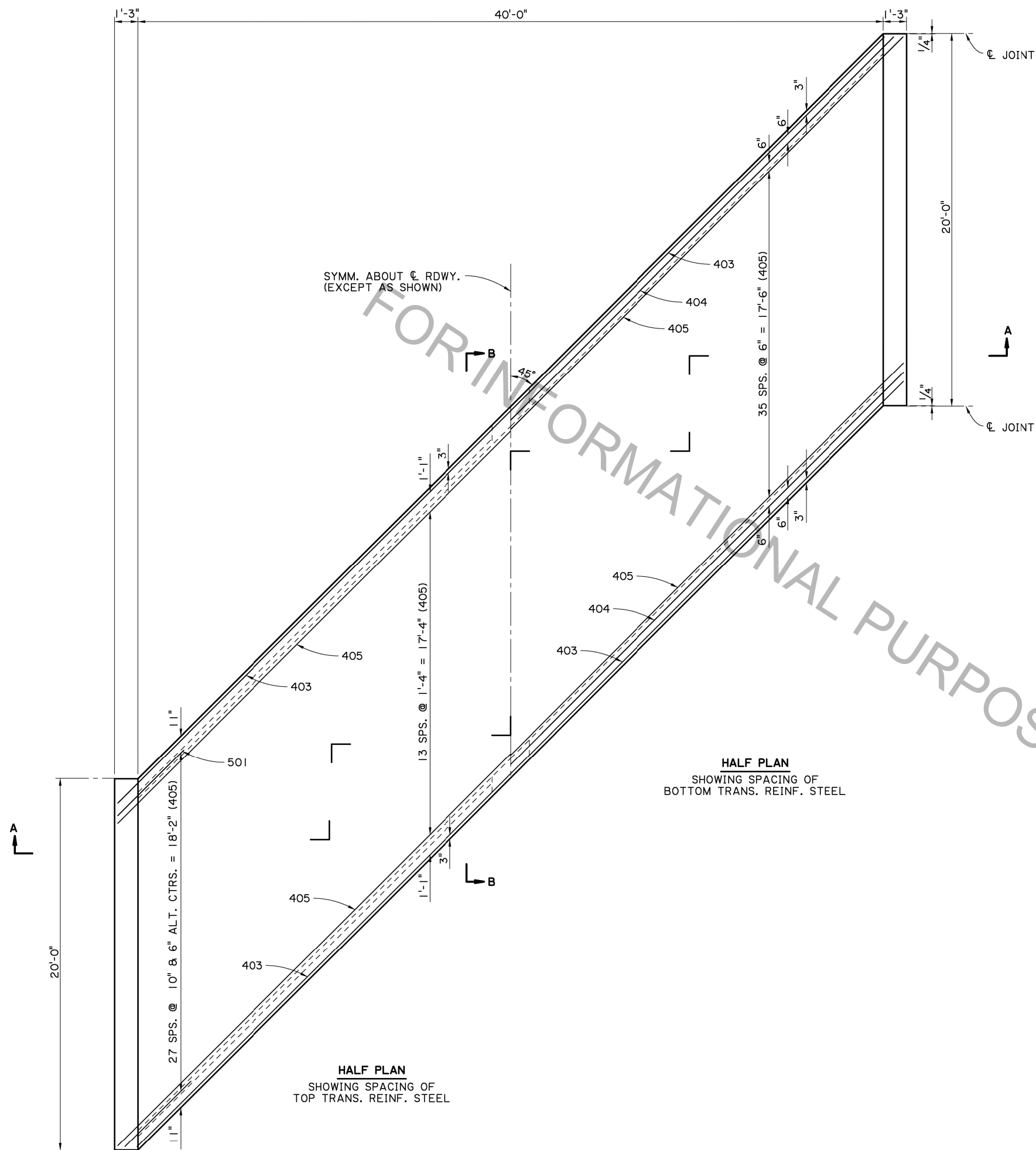
PRECAST CONCRETE PILES: FOR DETAILS SEE STANDARD DETAIL BD.2.5.1.0.01 (CS-216). EXTERIOR PILES ARE TO BE BATTERED OUTWARD AT 1 1/2 ON 12 IN THE LONGITUDINAL DIRECTION OF THE BENT, WHEN NOTED ON THE GENERAL PLAN.

PREFORMED JOINT MATERIAL: PREFORMED JOINT MATERIAL SHALL BE IN ACCORDANCE WITH SECTION 815.04 OF THE STANDARD SPECIFICATIONS.



Victor Sanchez
05/17/17

DESIGNED	J. NAKHLEH	PARISH	
CHECKED	B. DELATTE	CONTROL SECTION	
DETAILED	D. HYMEL	STATE	
CHECKED	J. NAKHLEH	PROJECT	
REVIEWED	OS/17/17		
SERIES #	2 OF 2		
NO.		REVISION OR CHANGE ORDER DESCRIPTION	BY
DATE			
BENTS (2 OF 2) REINFORCED CONCRETE PILE BENT 40'-0" CLEAR ROADWAY 45° CROSSING TWO WAY TANGENT			
STANDARD DETAIL BCSBR-45-40WT-20SL			
DOTD BRIDGE DESIGN			



SYMM. ABOUT ϕ RDWY.
(EXCEPT AS SHOWN)

HALF PLAN
SHOWING SPACING OF
BOTTOM TRANS. REINF. STEEL

HALF PLAN
SHOWING SPACING OF
TOP TRANS. REINF. STEEL

SPAN NOTES:

CONSTRUCTION SPECIFICATIONS: LATEST APPROVED LOUISIANA STANDARD SPECIFICATIONS FOR ROADS AND BRIDGES, SUPPLEMENTAL SPECIFICATIONS AND SPECIAL PROVISIONS.

DESIGN SPECIFICATIONS: AASHTO LRFD BRIDGE DESIGN SPECIFICATIONS, 4th EDITION WITH 2008 & 2009 INTERIMS.

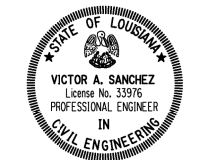
DESIGN LOAD: THE BRIDGE DECK IS DESIGNED FOR A FUTURE WEARING COURSE OF 19 PSF. THE LIVE LOAD IS HL-93, AND LADV-11 (LOUISIANA DESIGN VEHICLE LIVE LOAD 2011).

STRUCTURAL CONCRETE: ALL CONCRETE SHALL BE CLASS A1. EXPOSED EDGES SHALL HAVE A 3/4" CHAMFER UNLESS OTHERWISE NOTED. JOINT SEALANT, BACKER MATERIAL, PREFORMED JOINT FILLER, AND ASPHALT SATURATED FELT SHALL BE INCLUDED IN THE PRICE BID FOR CLASS A1 CONCRETE.

REINFORCING STEEL: ALL REINFORCING STEEL SHALL BE GRADE 60. DIMENSIONS RELATING TO SPACING ARE TO BAR CENTERS, DIMENSIONS RELATING TO FABRICATION ARE OUT TO OUT OF BARS UNLESS OTHERWISE NOTED. ALL REINFORCING BARS SHALL BE PLACED TO PROVIDE A MINIMUM COVER OF ONE INCH FROM THE SURFACE OF THE DRAIN HOLES TO THE FACE OF THE BARS EXCEPT FOR THE TRANSVERSE BARS WHICH MAY BE CUT FOR THIS PURPOSE.

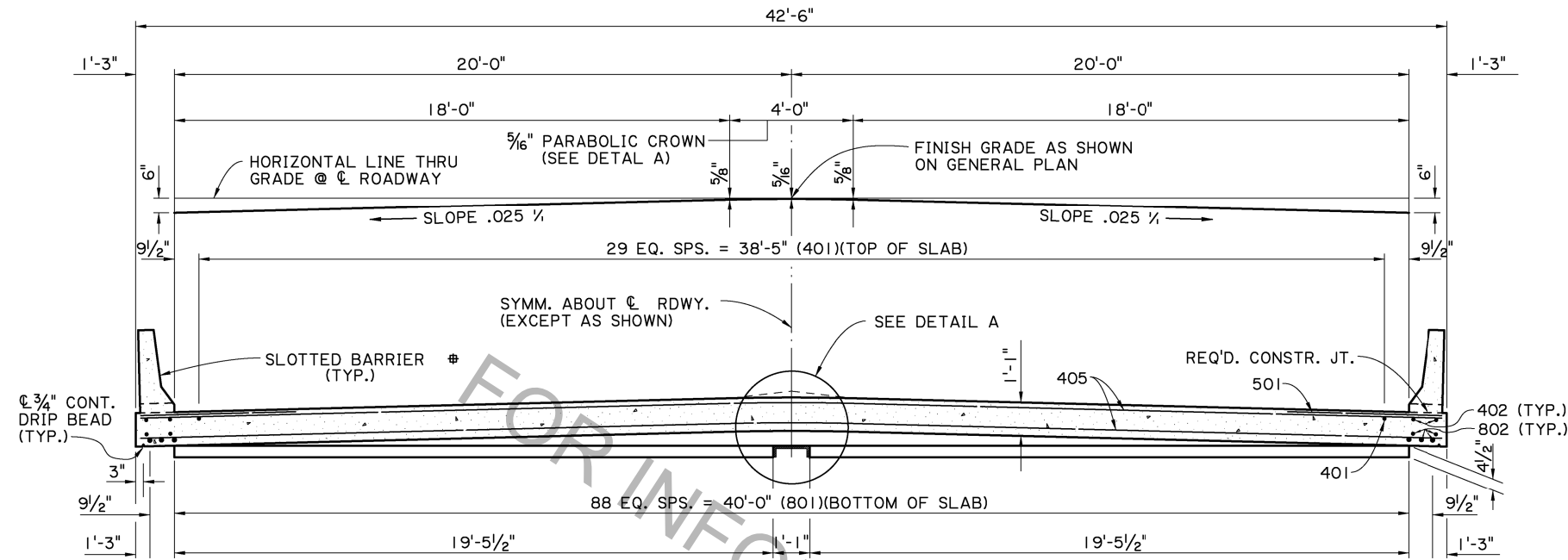
GUARD RAIL: REFER TO THE GENERAL PLAN AND STANDARD PLAN BD.1.1.1.0.01 (GR-200) FOR GUARD RAIL REQUIREMENTS.

BARRIER RAILING: FOR BARRIER RAILING DETAILS, SEE STANDARD DETAIL BD.2.6.1.14.02 (BR-02).

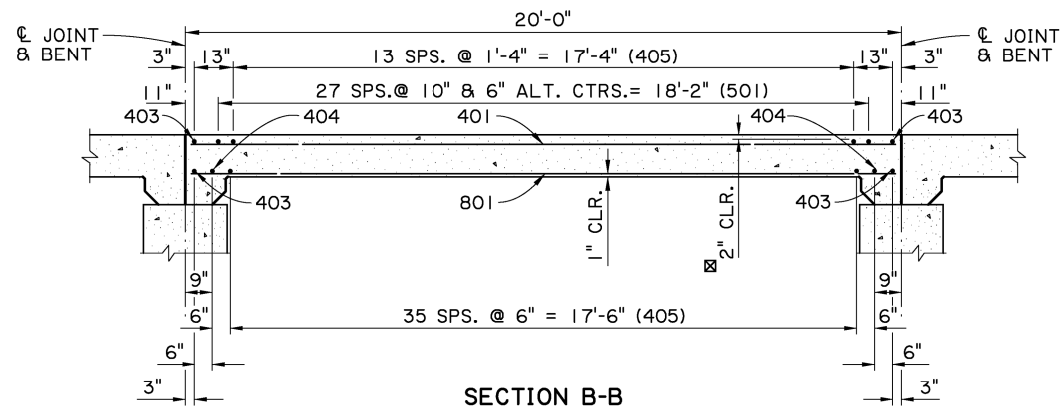


Victor Sanchez
05/17/17

SHEET NUMBER		PARISH		CONTROL SECTION		STATE PROJECT	
DESIGNED	J. NAKHLEH	CHECKED	B. DELATTE	REVIEWED	05/17/17	SERIES #	1 OF 2
DETAILED	D. HYMEI	CHECKED	J. NAKHLEH	REVISION OR CHANGE	ORDER DESCRIPTION	NO.	DATE
BY		DATE		NO.		DATE	
SPAN (1 OF 2) 20'-0" CONCRETE SLAB SPAN 40'-0" CLEAR ROADWAY 45° CROSSING TWO WAY TANGENT		STANDARD DETAIL		CSSBR-45-40TWT-20SL		DOTD BRIDGE DESIGN	

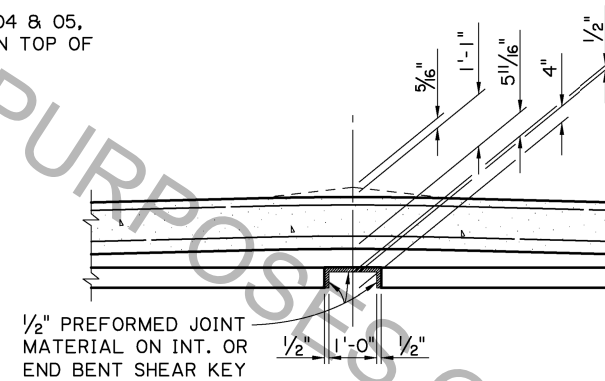


SECTION A-A

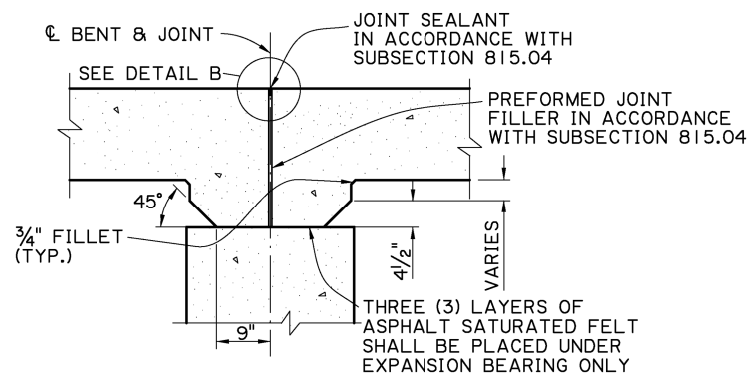


SECTION B-B
SCALE: 3/8" = 1'-0"

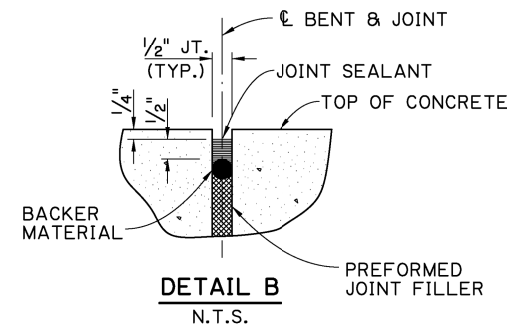
FOR BRIDGES IN DISTRICTS 04 & 05, MINIMUM CONCRETE COVER IN TOP OF SLAB SHALL BE 2 1/2"



DETAIL A
SCALE: 1/2" = 1'-0"



DETAIL SHOWING TYPICAL JOINT & HAUNCH
SCALE: 1/2" = 1'-0"



DETAIL B
N.T.S.

ESTIMATED QUANTITIES (ONE SPAN)				
BAR NO.	UNIT LENGTH	TOTAL LENGTH	LOCATION	
801	89	19'-5"	1728'-1"	LONGIT. BOT. OF SLAB
802	8	19'-7"	156'-8"	LONGIT. BOT. OF SLAB
TOTAL NO. 8 BARS = 1884'-9" = 5033 LBS.				
501	56	5'-0"	280'-0"	TRANS. TOP OF SLAB
TOTAL NO. 5 BARS = 280'-0" = 292 LBS.				
401	30	19'-5"	582'-6"	LONGIT. TOP OF SLAB
402	4	19'-7"	78'-4"	LONGIT. TOP OF SLAB
* 403	4	59'-10"	239'-4"	TRANS. TOP & BOT. OF SLAB
* 404	2	60'-6"	121'-0"	TRANS. BOT. OF SLAB
* 405	50	61'-3"	3062'-6"	TRANS. TOP & BOT. OF SLAB
TOTAL NO. 4 BARS = 4083'-8" = 2728 LBS.				
TOTAL DEFORMED REINFORCING STEEL = 8053 LBS.				
CLASS A1 CONCRETE = 36.53 CU. YDS.				
CONCRETE RAILING (BARRIER TYPE) = 40.00 LIN. FT.				

* INCLUDES ONE (1) 1'-8" MINIMUM LAP SPLICE. ALL LAP SPLICES ARE TO BE STAGGERED.

AS-DESIGNED RATING		
VEHICLE	RATING FACTOR	NOTES
HL-93 (INV)	1.400	---
HL-93 (OPR)	1.815	---
LADV-11 (INV)	1.077	MAGNIFICATION FACTOR = 1.3

SHEET NUMBER

DESIGNED BY: J. NAKHLEH
CHECKED BY: B. DELATTE
DATE: 05/17/17

PARISH: LA
CONTROL SECTION: 05/17/17
STATE: LA
PROJECT: CSSR-45-40WT-20SL

NO. 2 OF 2

REVISION OR CHANGE ORDER DESCRIPTION

DATE

NO.

STATE OF LOUISIANA
VICTOR A. SANCHEZ
License No. 33976
PROFESSIONAL ENGINEER
IN
CIVIL ENGINEERING

05/17/17

SPAN (2 OF 2)
20'-0" CONCRETE SLAB SPAN
40'-0" CLEAR ROADWAY
45° CROSSING TWO WAY TANGENT

DOTD
DOTD BRIDGE DESIGN